

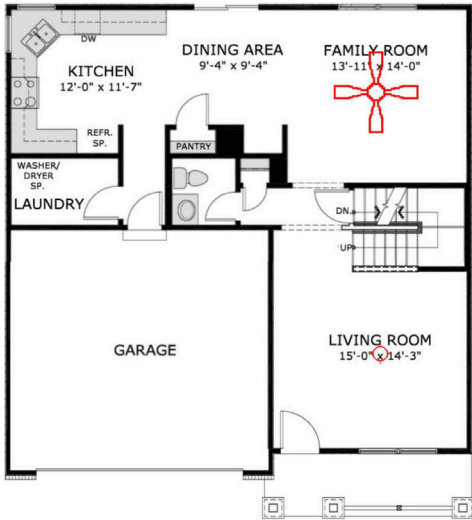
# ESKRIDGE ESTATES

## 1248 ESKRIDGE LANE



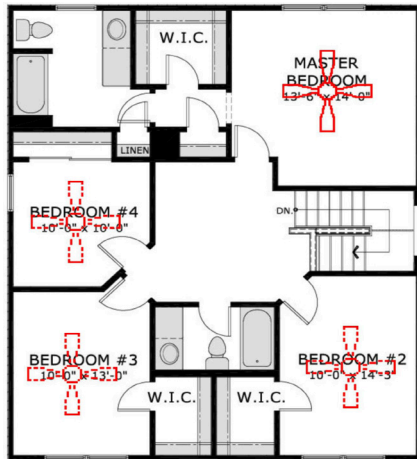
### LUXURY LIVING AT STERLING

The Sterling's spacious four-bedroom floorplan offers two living areas, a gourmet, open kitchen with dining area, plus generous closet space and windows galore.



Main Level Floor Plan

Two sun-filled living areas and a large, open kitchen with dining area give your family plenty of space to work and play at home. Enjoy the convenience of a main level mud room/ laundry.



Upstairs Floor Plan

The Master Suite features a large walk-in closet and luxury bath. Three more bedrooms with large closets and another bath complete the upstairs.

### FEATURES

- 4 Bedrooms, 2.5 Baths
- Spacious, Open Kitchen
- Two Living Areas
- Luxury Master Suite
- Attached Two-Car Garage
- Security features
- Main Level Laundry with Appliances



# ESKRIDGE ESTATES

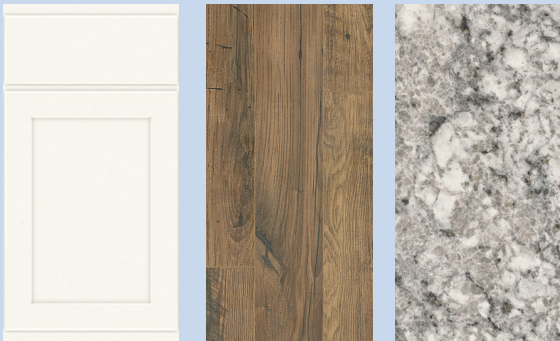
## 1248 ESKRIDGE LANE



KITCHEN



FAMILY ROOM



Cabinets

Flooring

Countertops

## Interior Specifications

### Kitchen

- Cabinets: White
- Appliances: Stainless steel electric range/ oven, refrigerator, dishwasher, microwave
- Countertops: Argento Romano
- Flooring: Brownstone Laminate

### Living and Family Rooms

- Flooring: Brownstone Laminate

### Bedrooms

- Flooring: Ivory Mist Carpet
- Master Bedroom Walk-in Closet

### Bathrooms

- Cabinets: Sarasparilla
- Countertops: Natural White
- Flooring: Ice Fog

### Laundry Area

- Appliances: White washer and dryer
- Flooring: Brownstone Laminate

## Exterior Specifications

- Elevation: Country II  
Brick: Bourbon Trail  
Siding: Horizontal Vinyl, Harvard Slate  
Shutters: Black  
Windows: White  
Roof: Architectural Shingles, Pewter Gray  
Soffit and Gutters: White  
Garage Door: 7 feet, white with opener  
Security features



MASTER BATHROOM